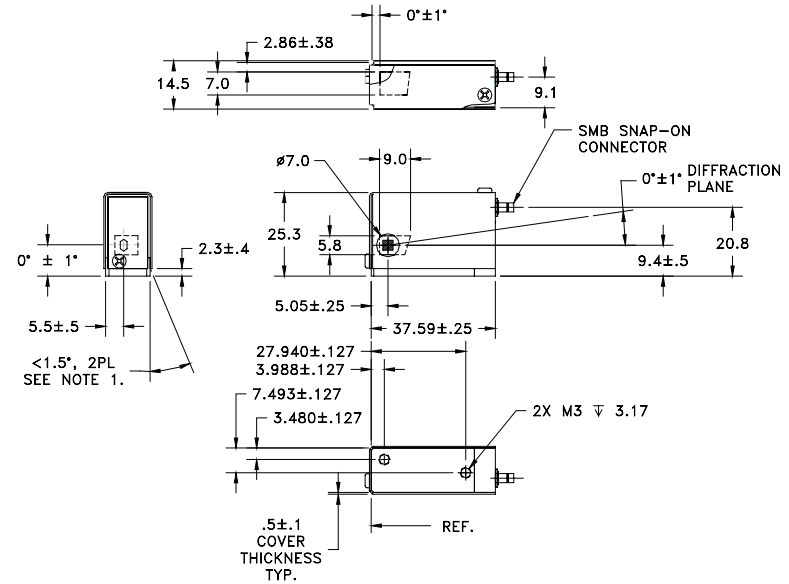


SPECIFICATIONS

OUTLINE DRAWING

AO Medium	TeO ₂
Acoustic Mode	Shear, On- Axis
Acoustic Velocity	617 m/sec ± 1%
Wavelength	635 nm
Input Polarization	Linear, Horizontal
Output Polarization	Linear, Horizontal
Insertion Loss	< 5%
Center Frequency (Fc)	80 MHz
RF Bandwidth	8 MHz
RF Power	< 500 mw
Active Aperture	2 x 2 mm
Average Diffraction Efficiency	
Flatness Across Bandwidth	
Min Diffraction Efficiency	50%
VSWR	1.65 : 1
Scan Angle	N/A
Time Bandwidth	N/A



Please contact our Sales staff for additional details.

For Reference Only

THIS DOCUMENT IS THE PROPERTY OF CRYSTAL TECHNOLOGY, INC. IT IS NOT TO BE REPRODUCED OR DISCLOSED IN WHOLE OR IN PART OTHER THAN BY EMPLOYEES OF CRYSTAL TECHNOLOGY AND ITS CONTRACTED REPRESENTATIVES AND DISTRIBUTERS. ANY EXCEPTION REQUIRES THE WRITTEN CONSENT OF AN AUTHORIZED REPRESENTATIVE OF CRYSTAL TECHNOLOGY.

TOLERANCES: .XX .XXX	DR	Geri Scholz 5/6/2003	Crystal Technology, Inc. DESCRIPTION: AODF 4080-13		
MATERIAL:	CHK				
FINISH:	APP				
	APP		PART NUMBER:	REV:	SHEET 1 OF 1